

Kick Start Installation Procedure for 06 450er

Having the Service manual will be very helpful for this installation.

All Images belong to QuadRacer041 I hope he does not mind me using them

Drain the transmission fluid and coolant.

Next remove the 2 coolant hoses off the water pump, then removed the clutch cover.

Note: Use engine assembly lube on all the parts to be installed.



Install the bearing in the right side center case for the kick starter first idle gear.



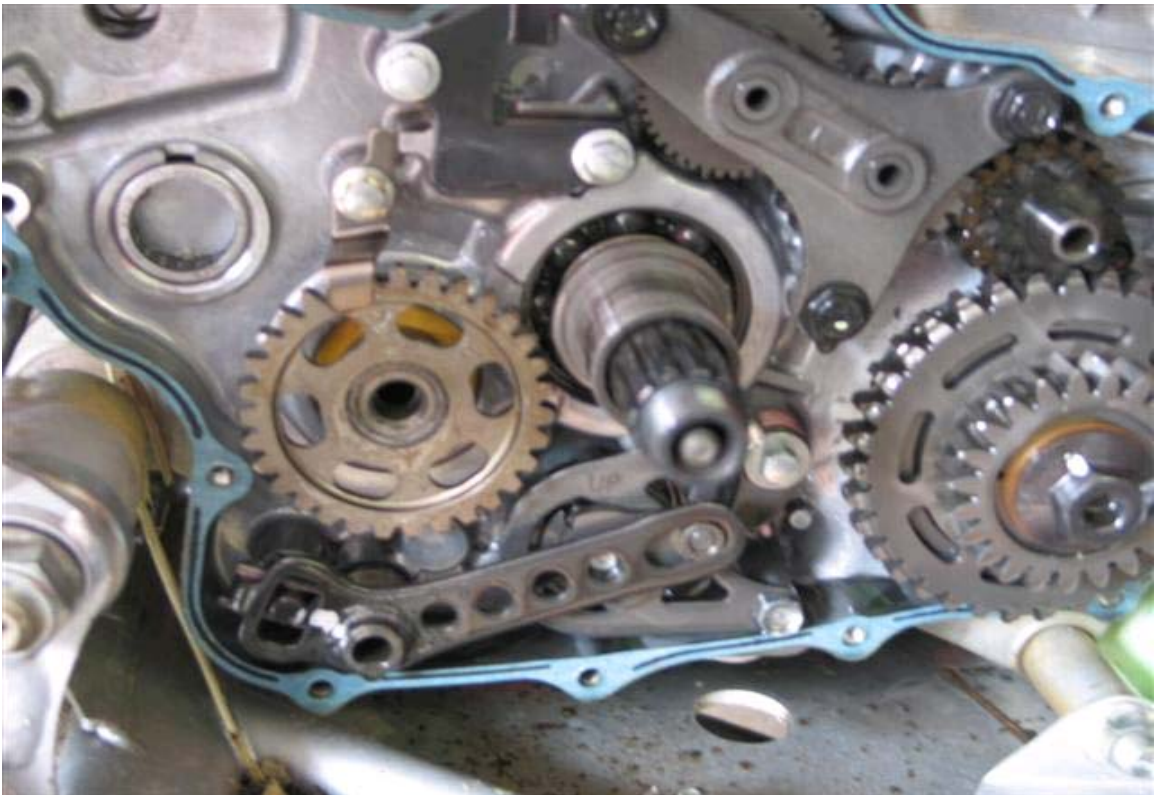
Then install the smaller bearing in the clutch cover for the other end of the kick starter first idle gear.



Remove the clutch and basket assembly to install the kick start idle gear.



Install the gear on the collar then install the gear/collar onto the end of the countershaft then install the stopper plate.



Reinstall the clutch/basket assembly.
Kick start first idle gear and thrust washers, lube them with engine assembly lube
and install.



Note the location to the left of the clutch basket.



Install the second stopper plate.



Kick start shaft and gear assembly, there are several parts in this assembly so referencing the service manual is recommended.
(Exploded view of all the parts and the order installed)



Install the kick start shaft gear assembly into the right side center case then rotate the recoil spring counter clockwise and put the end into the hole in the case above where the dowel pin is located this will lock and hold it in place.

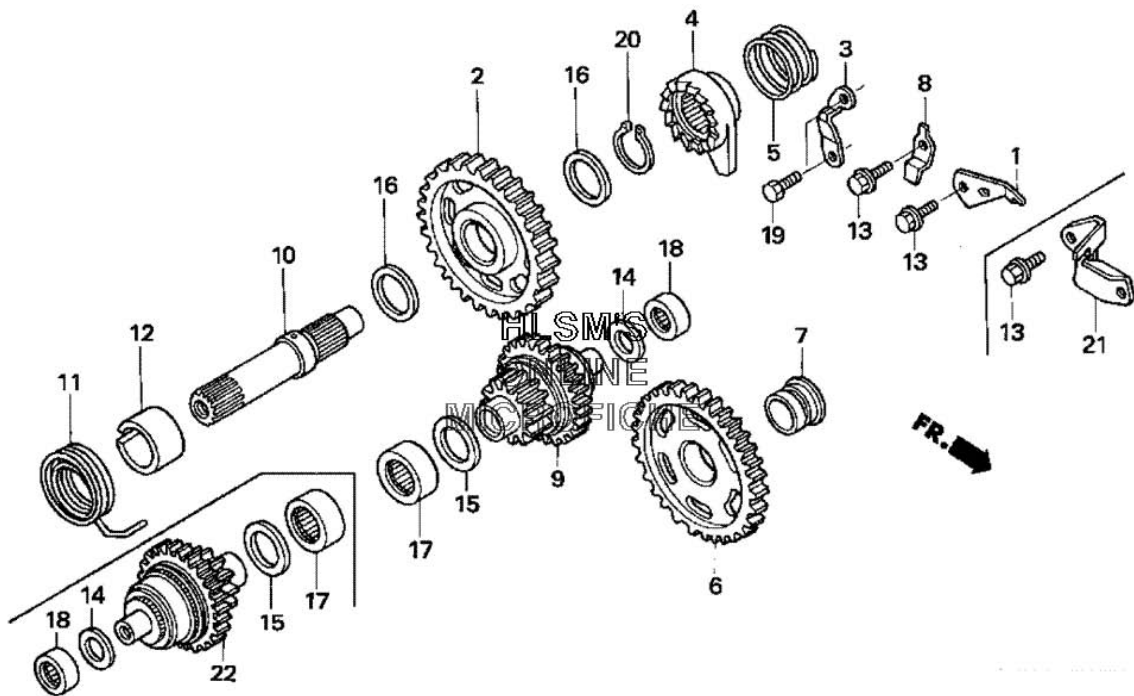


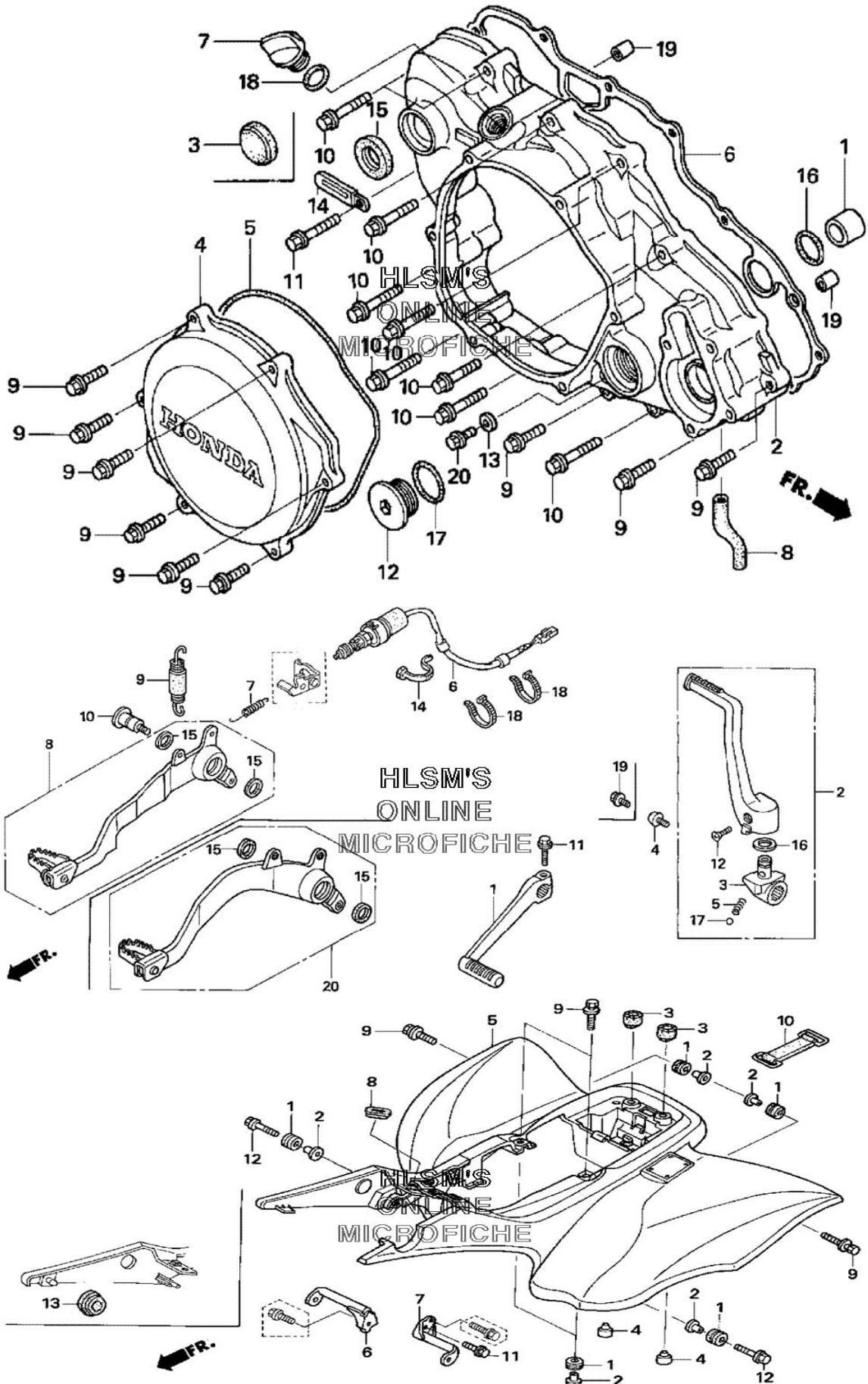
Reinstall the clutch cover, reconnect the coolant hose's install the kick star lever and add transmission oil and coolant.

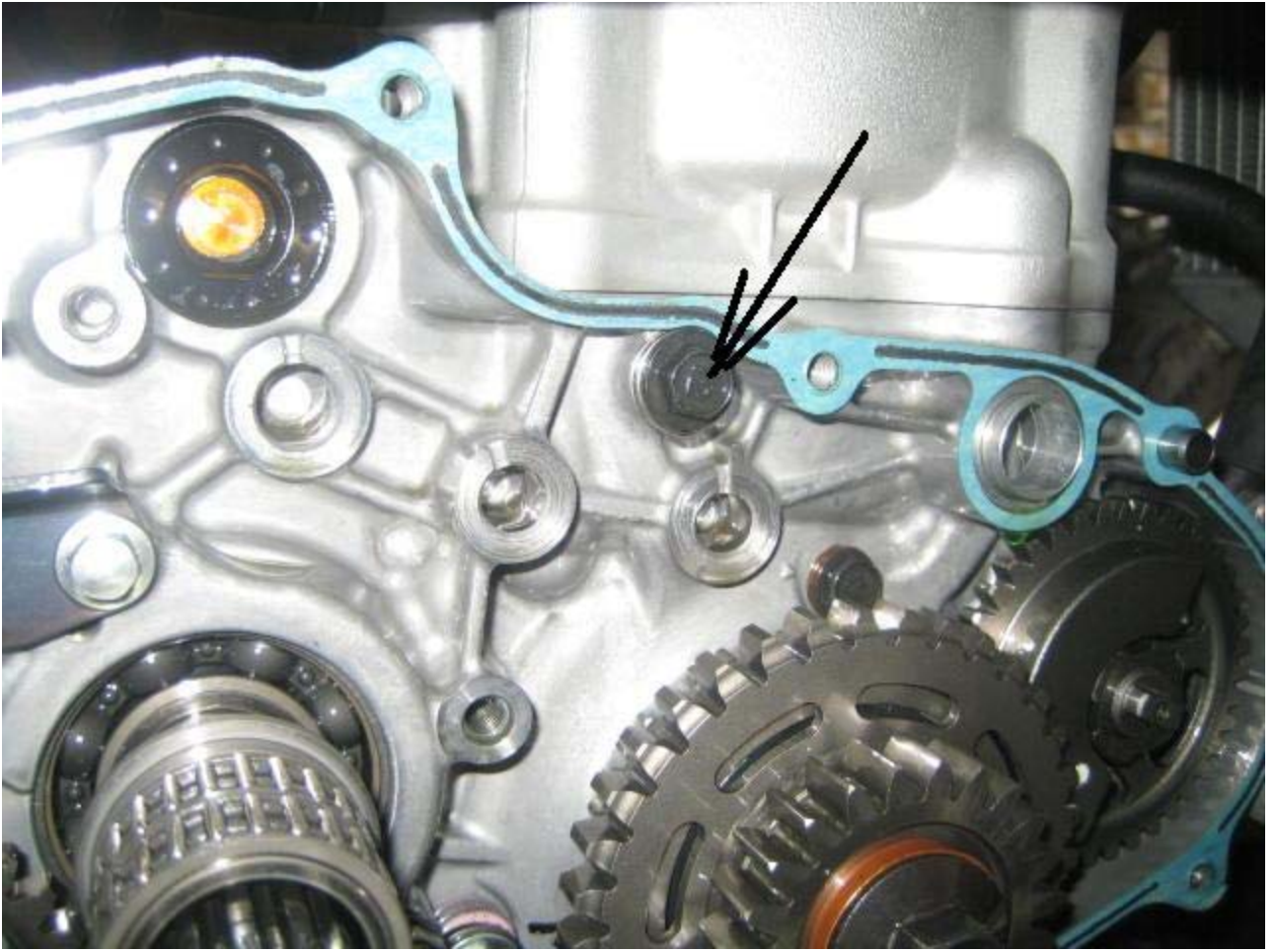
Reference:

Honda TRX450ER Kick Start Parts List.

QTY	PART NUMBER	DESCRIPTION	FICHE	NUM
1	28211-HP1-670	PINION (28T)	KICK STARTER SPINDLE	2
1	28215-HP1-670	PLATE, KICK STOPPER	KICK STARTER SPINDLE	3
1	28221-HP1-670	RATCHET	KICK STARTER SPINDLE	4
1	28223-HP1-670	SPRING	KICK STARTER SPINDLE	5
1	28231-HP1-670	GEAR (31T)	KICK STARTER SPINDLE	6
1	28232-HP1-840	COLLAR	KICK STARTER SPINDLE	7
1	28233-HP1-840	PLATE	KICK STARTER SPINDLE	8
1	28251-HP1-840	SPINDLE	KICK STARTER SPINDLE	10
1	28261-HP1-840	SPRING	KICK STARTER SPINDLE	11
1	28282-HP1-840	COLLAR	KICK STARTER SPINDLE	12
1	90004-GHB-620	BOLT, FLANGE (6X14)	KICK STARTER SPINDLE	13
1	90451-PC9-000	WASHER (14MM)	KICK STARTER SPINDLE	14
1	90455-ML7-000	WASHER B (22MM)	KICK STARTER SPINDLE	15
2	90554-728-940	WASHER (27X20X1.0)	KICK STARTER SPINDLE	16
1	91007-HP1-671	BEARING (22X29X10)	KICK STARTER SPINDLE	17
1	91105-KN7-671	BEARING, NEEDLE	KICK STARTER SPINDLE	18
2	93301-06016-0A	BOLT, HEX. (6X16)	KICK STARTER SPINDLE	19
1	94510-19000	CIRCLIP (19MM)	KICK STARTER SPINDLE	20
1	28240-HP1-840	GEAR (25T/13T)	KICK STARTER SPINDLE	22
1	91204-KF0-003	OIL SEAL (20X28X5)	RIGHT CRANKCASE COVER	15
1	28300-HP1-840	ARM, KICK STARTER	PEDAL	2
1	28306-MEN-670	BOLT, KICK JOINT	PEDAL	19
1	80100-HP1-840ZB	FENDER, RR. *NH1*	REAR FENDER	1







If removing all E start components, you must refit this bolt. (oil transfer issue if you don't), needs washers to prevent too much incursion into case.