



Installation Instructions

04-07 YAMAHA RHINO 660

page 1 of 3

PARTS INCLUDED TOOLS REQUIRED

- | | |
|-------------------|------------------------|
| (2) Mufflers | • 10,12mm box wrenches |
| (1) Right Header | |
| (1) Left Header | |
| (1) Frame Bracket | |
| (1) Hardware Kit | |

Thank you for choosing to install the finest exhaust system available. DMC uses only the latest technology to deliver big gains in acceleration, horsepower and torque, while capturing additional strength and critical weight savings.

Please read all instructions carefully and thoroughly before installing this system. Any references to "left" or "right" indicates sides as if you were driving, facing forward.

REMOVAL PROCEDURE

1. Be sure that engine and exhaust are cool to the touch before beginning any work.
2. Remove the bed off the Rhino. Loosen and remove the muffler mounting bolts and springs at the midpipe junctions. Then remove head pipe and muffler. Keep all hardware as they may be used in installation of your new pipe.

INSTALLATION PROCEDURE

PLEASE NOTE, FOLLOWING THE INSTALLATION PROCEDURE IN THE ORDER IT'S PRESENTED HERE WILL MAKE INSTALLATION EASIER. IT IS NOT RECOMMENDED TO STEP AHEAD.

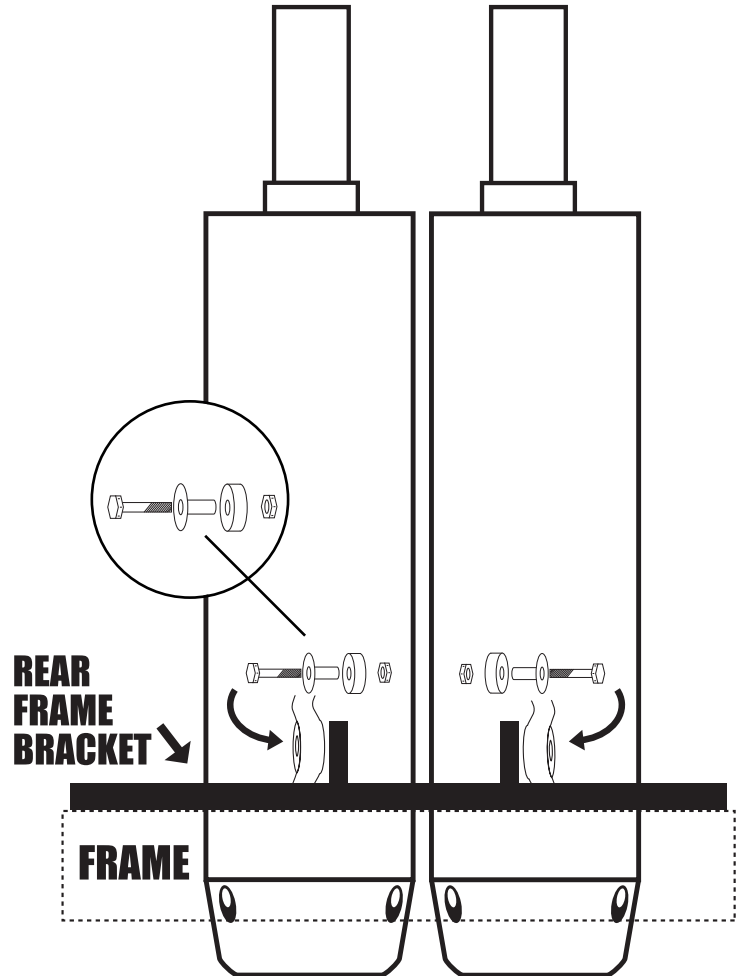
3. Begin by installing the supplied rear Frame Bracket to the frame of the Rhino. Refer to the illustration at right to see the placement location.
4. Replace your exhaust gaskets for proper sealing and performance.
5. Loosely secure the DMC headers to the cylinder head. Each header is labeled with a sticker indicating left or right placement as if you were sitting on the Rhino facing forward.
6. Insert the supplied rubber bushings into each of the two brackets on the mufflers.
7. Insert the left muffler into the headpipe assembly and loosely secure the muffler bracket to the Frame Bracket. Note the positions and placements of the hardware, muffler bracket, and frame bracket.
8. Install the right muffler as shown with the muffler brackets to the inside. Note the positions and placements of the hardware, muffler bracket, and frame bracket.
9. Loosely insert the remaining hardware as shown into the muffler bracket.
10. Prior to tightening any bolts or nuts, ensure entire exhaust system is free of any binding or stress.

DO NOT OVERTORQUE. FOLLOW OEM TORQUE SPECIFICATIONS UNLESS NOTED OTHERWISE

11. Look over installation to insure pipe does not come in contact with any cables, hoses or frame.

START UP PROCEDURE

12. After completing installation and making any Electronic Fuel Injection changes (if required), start your engine in a well-ventilated area and check for any exhaust leaks.
13. We recommend riding for 30 minutes to allow components to properly seat.
14. Allow engine to cool down and recheck all fasteners.



IMPORTANT!

This installation requires jetting adjustments! Be sure to follow the jetting guidelines on the next page.

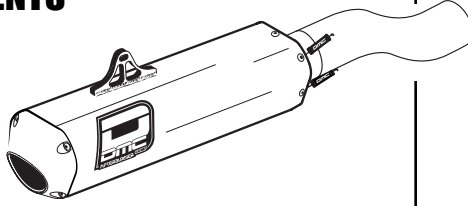


Installation Instructions

BE SURE TO REGISTER YOUR DMC EXHAUST ONLINE AT WWW.DMC-ON-LINE.COM

JETTING ADJUSTMENTS

- Pilot Jet.....#62-65
- Main Jet.....165-170
- Needle.....Stock
- Air Screw.....Stock
- Clip Position.....Stock



ADJUSTMENTS FOR ALTITUDE & TEMPERATURE

Recommendations are based on standard jetting with an unmodified engine. It may be helpful to know that these conditions can affect the fuel mixture.

CONDITION	MIXTURE WILL BE	ADJUST TO
Cold Temperature	lean	richer
Warm Temperature	rich	leaner
Dry Air	lean	richer
High Humidity	rich	leaner
High Altitude	rich	leaner

DMC highly recommends you adjust your carburetor jetting as shown in the series of images below. **FAILURE TO DO SO WILL RESULT IN ENGINE AND/OR SYSTEM DAMAGE. IF OTHER MODIFICATIONS ARE MADE SUCH AS REMOVAL OF AIR BOX LID, DRAMATIC CHANGE IN ELEVATION, TEMPERATURE, ETC., YOU WILL NEED TO JET FOR THOSE CONDITIONS!** DMC jetting specs are based on a stock motor with a DMC Exhaust, at sea level, temperature of 65°F using 91 octane pump gas. Appropriate jetting specs for your specific riding area may be available by contacting your local dealer or mechanic.

NEEDLE ADJUSTMENT PROCEDURE



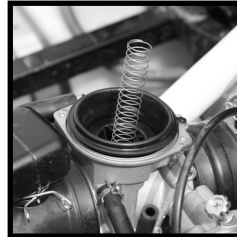
Remove both seats easily by lifting the release lever under each seat.



Lift and remove the center console between the two seats.



Remove the two screws from the gold colored carburetor diaphragm cover.



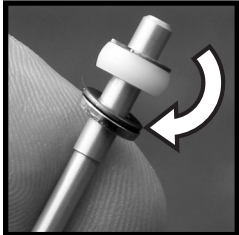
Remove the spring. Do not stretch or bend the spring.



Gently lift and remove the rubber diaphragm. Check for tears and replace if necessary.



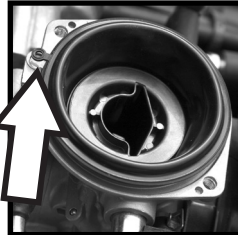
Using long-nose pliers, gently grasp and remove the needle keeper.



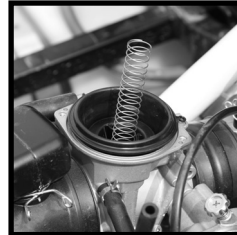
Remove the needle. Take the thin metal shim that is sitting on top and move it as shown.



Place the needle back into the diaphragm and reinsert the needle keeper as shown.



Reinstall the diaphragm as shown, making sure you align the tab correctly.



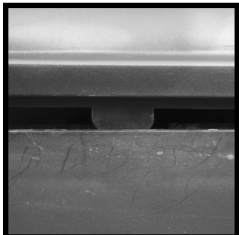
Reinstall the spring.



Reinstall the cover.



Reinstall the center console as shown. Pay close attention to the next photo...



As you reinstall the console, be sure the tabs on the top cover are inside the base cover.



Re-seal the rubber gaskets around the components on the console.

START UP PROCEDURE

1. After completing installation and making any jetting changes (if required), start your engine in a well-ventilated area and check for any exhaust leaks.
2. We recommend riding for 30 minutes to allow components to properly seat.
3. Allow engine to cool down and recheck all fasteners.

DMC Exhaust
 930 Columbia Ave.
 Riverside, CA 92507
WWW.DMC-ON-LINE.COM

SPARK ARRESTOR

Spark arrestors are included with every Afterburner Exhaust. To access your Spark Arrestor simply remove the screws from the endcap.

MAINTENANCE

Please allow exhaust system to cool prior to washing or repair. DMC recommends using a mild soap such as dish detergent and water to wash your exhaust system. Also, you should not allow water to enter the silencer outlet while washing your bike or ATV.

As we all know, sound is a major issue, which can effect whether or not we continue to enjoy our sport without offending others. Also, your system performs best and will last longer when the silencer is properly maintained. Repacking your silencer depends on the type of riding and the amount of hours on the bike.

On a big-bore-four, frequent high speed riding will shorten the life of the packing. Your ears are the best guide to knowing when to repack, but as a rule, every 20-30 hours is a good guideline to inspect and replace if necessary. If and when it is time to repack, please use DMC Afterburner Repack Kits as they were tested and designed to provide the best performance.

To keep your spark arrestor clean, you can clear it out by using a soft bristled brush and soapy water.

DMC REPLACEMENT PARTS

- USFS Approved Spark Arrestor / #25911-10
- DMC Afterburner Repack Kit (Quiet Mufflers) / #25911-46

ADDITIONAL PERFORMANCE ACCESSORIES

- K&N Air Filter: #YA-6504
- No Toil Foam Filter: #NT380-16
- DynoJet Jet Kit: #81-Q425
- Advantage Power Pack: #23-Q425
- Rhino Rev Box: #30418-00
- K&N Rhino Aircharger Kit (adds 4.35 hp) #63-1119
- Rhino Carb Kit (adds 2.5hp) #18959-40



www.spectro-oils.com

DMC recommends using Spectro Oils for maximum protection.

TECHNICAL SUPPORT

If you ever lose your instructions or need additional information, simply visit the DMC website where we offer all the installation information that came with your DMC exhaust. If, at any time, there is further news regarding modifications, jetting adjustments, or other, the DMC website is a great source for obtaining the latest news.

WARRANTY

Since we designed, developed and manufactured your DMC Exhaust to provide reliable performance, we guarantee your system for one year against defects in materials and workmanship. We are proud of our attention to the quality of manufacturing your DMC product and we stand behind our products.

In the unlikely event a problem arises with your system, please contact the dealer from whom it was purchased. They can contact DMC and get your system to us for a warranty determination. We will make every attempt for a prompt repair or replacement at our determination and expense.

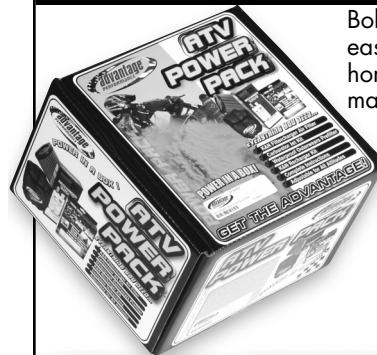
It is important to note that our warranty is not unconditional. Although your DMC product was made with the finest materials and hand crafted to strict stands, it is not indestructible. Therefore, our warranty does not cover product damage as a result from abuse, misuse, improper installation, modifications or lack of maintenance. We also do not cover any damages whether consequential, incidental, special, contingent or otherwise: or expenses or injury arising directly or indirectly from the use the use of the exhaust system.

As with any product, your DMC system should be expected to experience normal wear, which is not covered by any warranty. The duration of any and all implied warranties are limited to the duration of the express warranty.

There are other choices out there, but Advantage Power Packs are the only ones with GENUINE Pro Design and K&N components. Advantage Power Packs are also the only ones that include a K&N recharger kit. There is a difference. DON'T ACCEPT IMITATIONS!

ATV POWER PACK

AVERAGE 15% HORSEPOWER INCREASE



Bolt-on performance has never been so easy. Kits install in minutes, improve horsepower and throttle response while maintaining optimum fuel economy.

- ✓ K&N Filtercharger Air Filter
- ✓ DynoJet Carburetor Jet Kit
- ✓ Waterproof Outerwear's Prefilterer
- ✓ K&N Recharger Kit
- ✓ Adjustable for all altitudes

